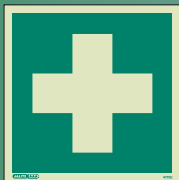


JALITE AAA emergency first aid equipment signs are designed specifically to be conspicuous in both normal and dark conditions. These signs locate and identify the type of first aid equipment available.

Sign Sizes



C size: 150 x 150mm
Ideal for small offices or areas.



E size: 200 x 200mm
Ideal for large industrial areas.



Panoramic Signs
P15: 150 x 150mm
P20: 200 x 200mm



Wall mounted double sided signs
FS15: 150 x 150mm
FS20: 200 x 200mm

Wall mounted double sided and panoramic signs are designed for use in corridors to enable viewing from either direction.

Materials



All JALITE Photoluminescent safety signs are manufactured on the JALITE AAA material. When ordering, please state:

R for JALITE AAA Photoluminescent Rigid PVC or **V** for JALITE AAA Photoluminescent Self Adhesive Vinyl

Wall mounted double sided and panoramic signs are available in JALITE AAA Photoluminescent Rigid PVC.

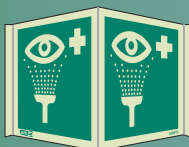
Eye Wash Facility



4388 C
4388 E



4388 FS15
4388 FS20



4388 P15
4388 P20

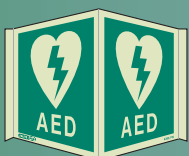
Defibrillator



4395 C
4395 E



4395 FS15
4395 FS20



4395 P15
4395 P20

First Aid Call Point



4393 C
4393 E

Doctor/Paramedic



4396 C
4396 E

Emergency Stop



4182 C
4182 E

JALITE AAA Self Adhesive Safe Condition Tape

Size	Product code
4cm x 5m	GT0504
8cm x 5m	GT0508
4cm x 10m	GT1004
8cm x 10m	GT1008



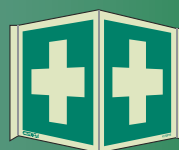
First Aid



4175 C
4175 E



4175 FS15
4175 FS20



4175 P15
4175 P20

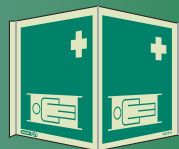
Stretcher



4387 C
4387 E



4387 FS15
4387 FS20



4387 P15
4387 P20

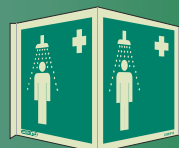
Emergency Shower



4389 C
4389 E



4389 FS15
4389 FS20



4389 P15
4389 P20

Drinking Water



4390 C
4390 E



4390 FS15
4390 FS20



4390 P15
4390 P20

Emergency Telephone



4392 C
4392 E



4392 FS15
4392 FS20



4392 P15
4392 P20

Hand Washing Facility



4391 C
4391 E



4391 FS15
4391 FS20



4391 P15
4391 P20

Breathing Apparatus



4394 C
4394 E



4394 FS15
4394 FS20



4394 P15
4394 P20